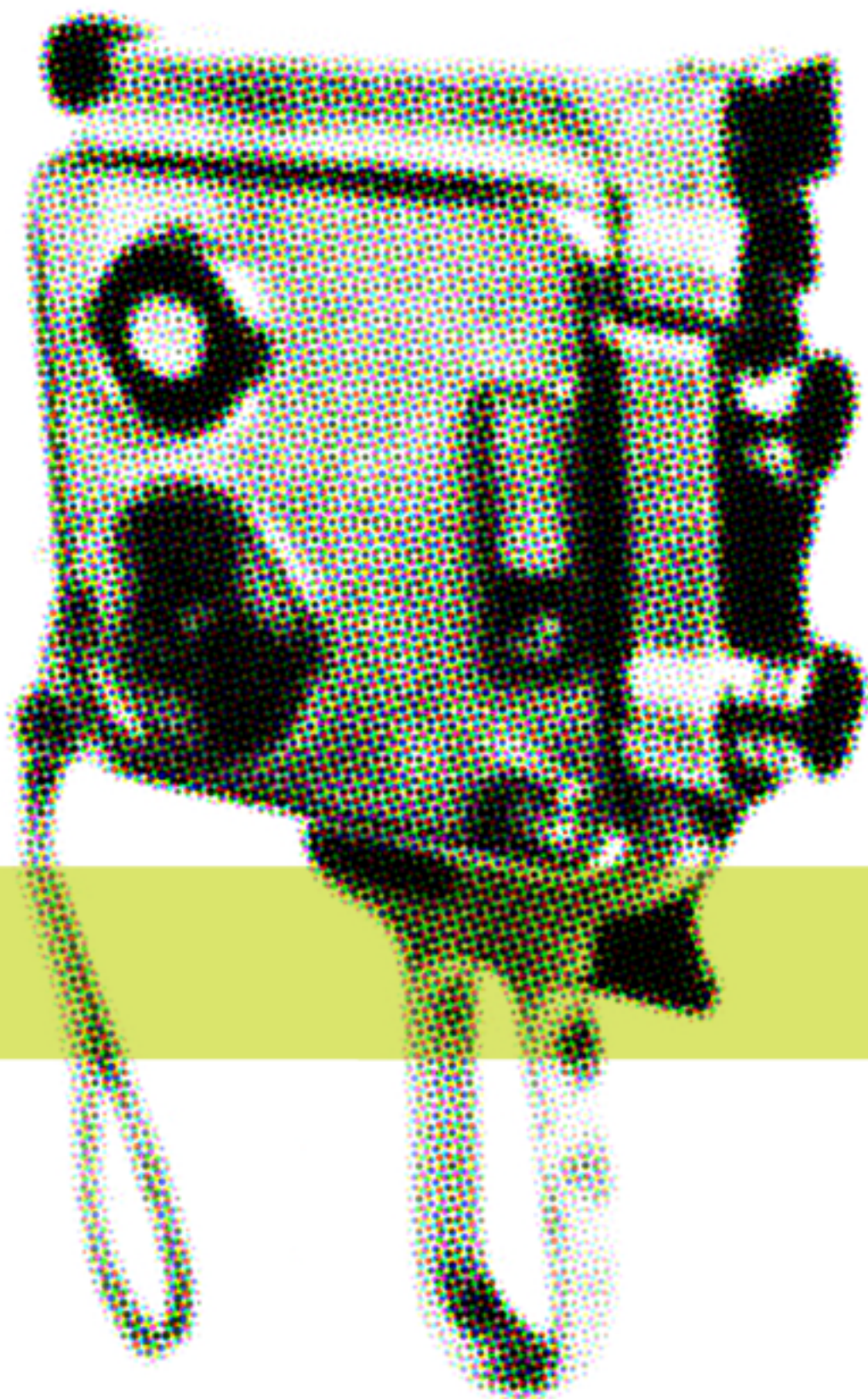


a fontomas font

Twitchon



TWRBOLN *regular & italic*

A B C D E F G H I J K L M N O P Q R S T U V W X Y Z

a b c d e f g h i j k l m n o p q r s t u v w x y z ß € ¢

À Á Â Ã Ä Å Æ Ç È É Ê Ë Ì Í Î Ï Ñ Ò Ó Ô Õ Ö Ù

Û Ü À Ã Ö 0 1 2 3 4 5 6 7 8 9 , . ; : ? ! & %

A B C D E F G H I J K L M N O P Q R S T U V W X Y Z

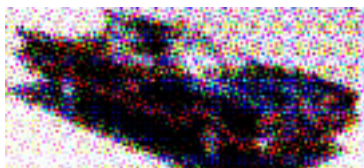
a b c d e f g h i j k l m n o p q r s t u v w x y z ß € ¢

À Á Â Ã Ä Å Æ Ç È É Ê Ë Ì Í Î Ï Ñ Ò Ó Ô Õ Ö Ù

Û Ü À Ã Ö 0 1 2 3 4 5 6 7 8 9 , . ; : ? ! & %

The Story of the Batmobile

14p. The story begins when Dean Jeffries, another famous customizer of the 60s, was contracted to build a Batmobile for a fall, 1966 TV series in the works at 20th Century Fox. Suddenly, the ABC TV network decided they wanted the shows launch moved up. and Dean Jeffries couldn't fit the rush job into his current work schedule, so he passed on it. He would, however, be asked to build, and did build, a car for the next ABC comic-book hero, The Green Hornet. that car was called Black Beauty.



The Futura had no side windows to roll down, so Ford designed a unique air-flow system that had air ducted thru the passenger compartment and out through V-shaped slots in the rear deck. When the Batmobile was painted, the inside surface of these vents was trimmed in the red paint. However, the replica fiberglass cars had no such vents - just look-alike steps molded in. Since there was no inside surface, the red trim got applied on the top of each step...

To make an uppercase line look good, please use one of this key combinations:

